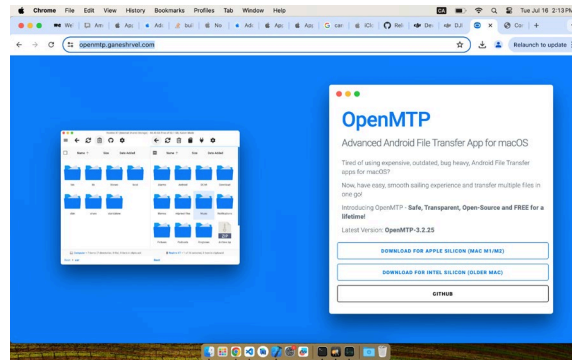


Accessing Labradar LX on a mac

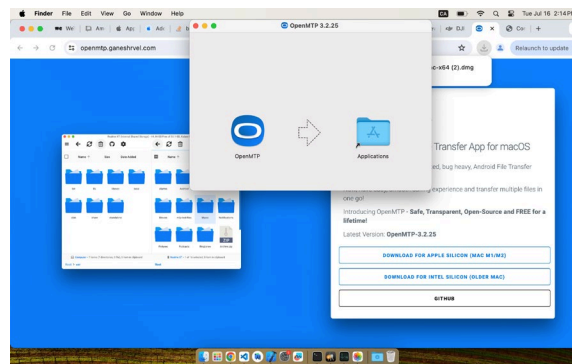
Download OpenMTP:

- Go to <https://openmtp.ganeshrvel.com/> from your Mac browser.
- Download OpenMTP. Choose the appropriate link based on your Mac device type (Intel or M1).
- In case you are not sure which architecture your CPU is using, Check the following link find out: <https://www.howtogeek.com/706226/how-to-check-if-your-mac-is-using-an-intel-or-apple-silicon-processor/>



Install OpenMTP:

- Once downloaded, open the downloaded file.
- Drag the OpenMTP icon into the Applications folder to install the app.



Launch OpenMTP:

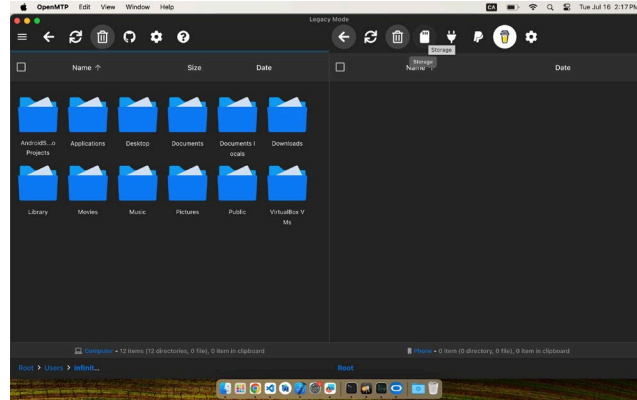
- Open Finder or go to your Applications folder.
- Find and open OpenMtp from the Applications folder.

Connect LX Device:

- Connect your LX device to your Mac using a USB cable.

Refresh Connection:

- In OpenMTP, click the refresh icon (two circular arrows) located at the top middle/right side of the application. This will detect the LX device.

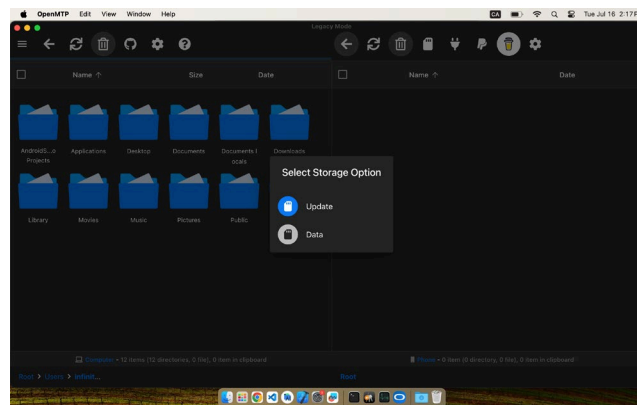


Access SD Card Content:

- After detection, the SD card icon on the right side of the application should no longer be grayed out. This icon represents the storage of your LX device.

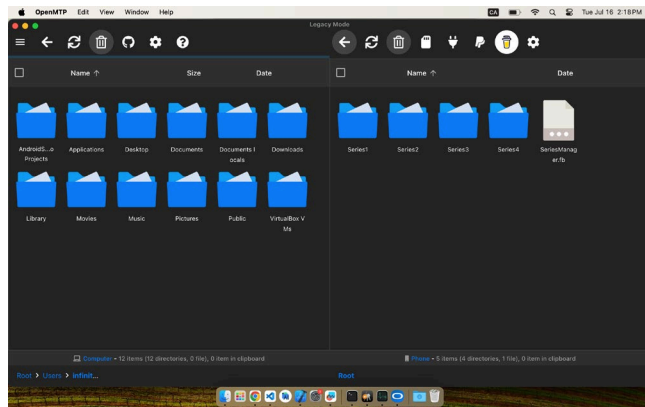
Transfer Files:

- Click on the SD card icon.
- A popup will appear with folders like "Update" and "Data."



- Select the "Data" folder if you're transferring series data to your Mac.

- Drag and drop the series data files from the right side (LX device) to any folder on the left side (your Mac).



Finish:

- Once the transfer is complete, you can safely disconnect your LX device from the USB port.